

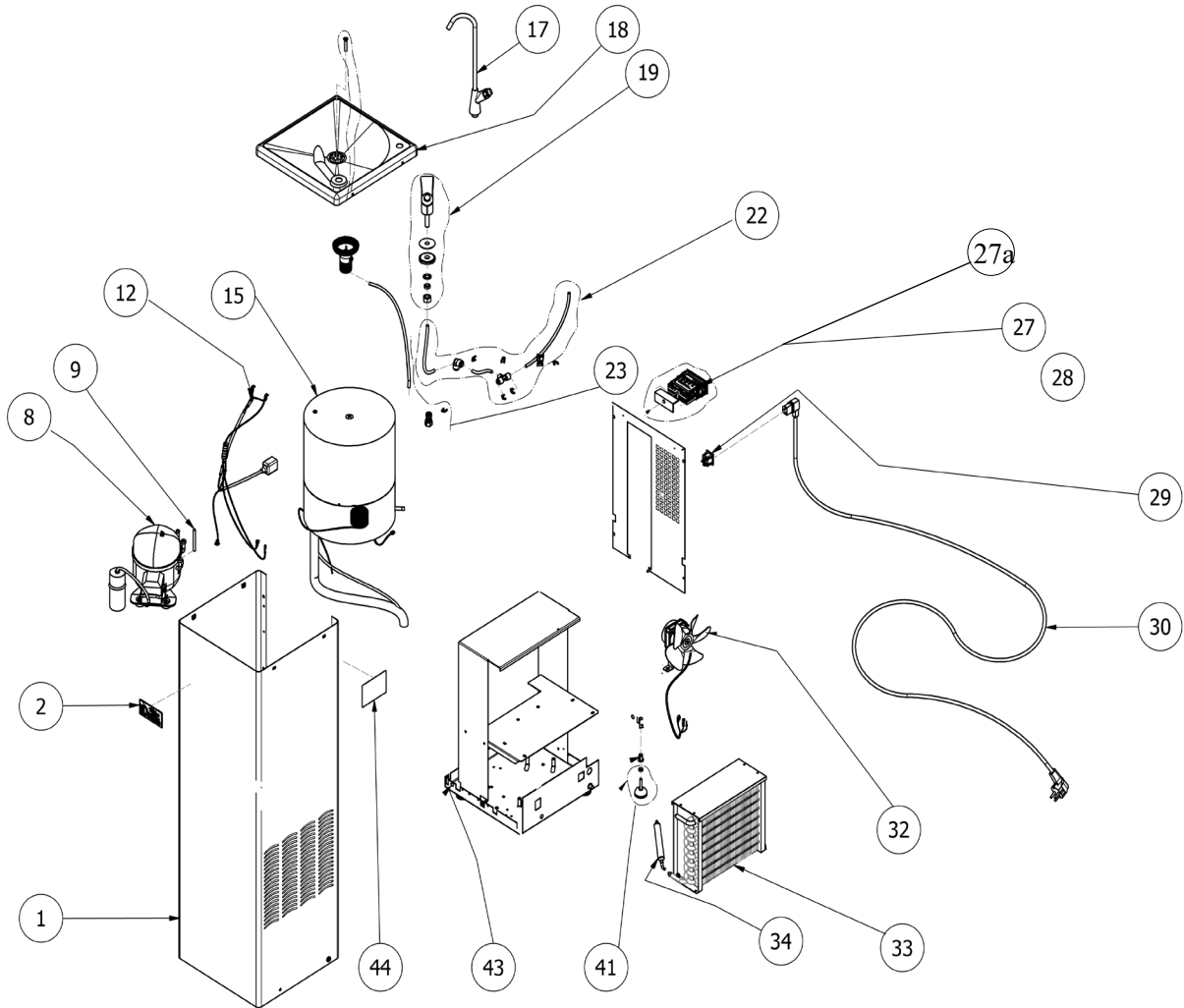
WFT6/WFP9T WATER FOUNTAIN
R290 GAS PARTS LIST

| No | Description | Code | Remarks |
|-----|---|--------|---|
| 1 | EXTERIOR CASING | CA02S | |
| 2 | AA FIRST LOGO | CA01 | |
| 8 | COMPRESSOR GROUP NBC22RA | CA08R | With R290 Gas |
| 9 | CHARGE TUBE | CA09R | With R290 Gas |
| 12 | CABLE IEC+CABLE TERM ST S7 | CA12R | With R290 Gas |
| 15 | INSULATED TANK GROUP S.T,4,6 | CA15R | With R290 Gas |
| 17 | SWAN NECK WFT6 PUSH BUTTON | CA14 | |
| 17a | SWAN NECK FOR THE WFP9T | CA14A | FOR WFP9T |
| 18 | DRIP TRAY WFT6 | CA11S | |
| 18a | DRIP TRAY WFP9T | CA11A | FOR WFP9T |
| 19 | BUBBLER | CA10 | |
| 22 | COLD WATER OUTLET FOR WFP9T | CA22R | With R290 Gas |
| 23 | PRESSURE RELIEF VALVE | CA59 | |
| 27 | DIGITAL THERMOSTAT FOR WFT6 & WFP9T | CA27R | With R290 Gas |
| 27a | MECHANICAL THERMOSTAT FOR WFT6 & WFP9T | CA27RM | For Fountains manufactured from January 2024 (Serial Number xxxx) |
| 28 | REAR PROTECTION GRID | CA28R | With R290 Gas |
| 29 | MAIN SOCKET | CA30 | |
| 32 | FAN MOTOR | CA46 | |
| 33 | CONDENSOR | CA48 | |
| 34 | FILTER/DRYER | CA49 | |
| 41 | ADJUSTABLE FOOT | CA42 | |
| 43 | CHASSIS | CA43R | With R290 Gas |
| 44 | TECHNICAL LABEL | CA55 | |
| | END OF TRAVEL MICRO SWITCH | CA62 | FOR WFP9T |
| | ELECTROVALVE AC220V | CA63 | FOR WFP9T |

Stainless Steel Body Fountain = Part number suffix S

*The Technical label on the side of the fountain identifies if it uses R134a or R290 gas.

WFT6/WFP9T WATER FOUNTAIN
R290 GAS EXPLODED DRAWING



AA First is a division of Circon Ltd : Registered in England 5121722

European HQ: Cedar House
Grange Farm
Long Lane
Newbury
RG14 2TF

T: +44 (0) 1635 202489
E: enquiries@aafirst.co.uk
W: www.aafirst.co.uk

Bureau Français: T: +33 (0) 640650708
E: lesley@aafirst.co.uk
W: www.aafirst.co.uk/french/

