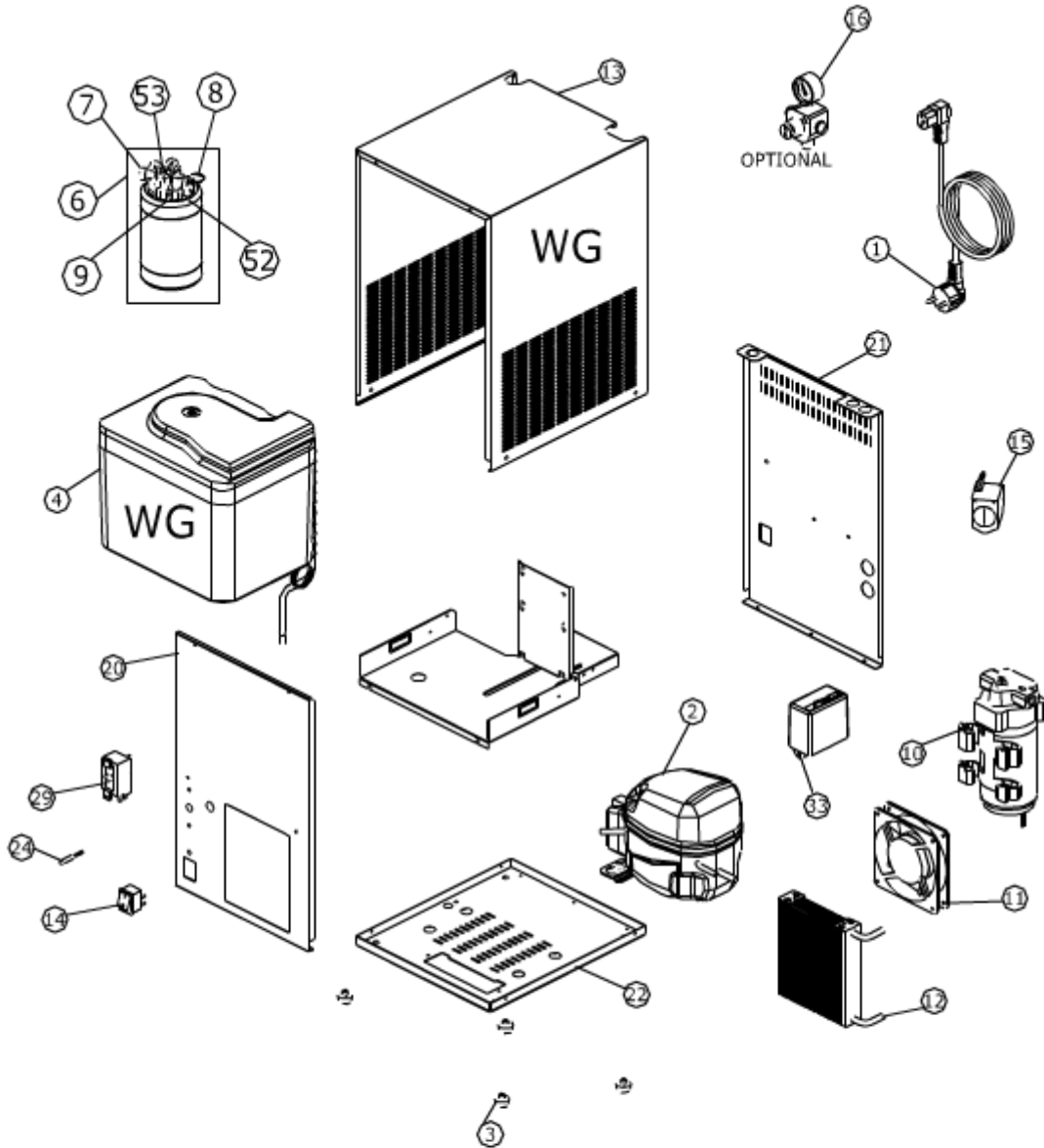


# H2OMY IN 15 IB CWG

## Technical Diagram



## Grouped product items

<b>Pos</b>	<b>Code</b>	<b>Product Name</b>
1	3821719	<b>UK POWER CABLE</b>
1	3821718	<b>SCHUKO ELECTRIC CABLE</b>
2	1581178	<b>COMPRESSOR 230V-50Hz</b>
2	2641412	<b>COPPER FILTER</b>
3	2781686	<b>FEET</b>
4	815011119	<b>MINI ICE BANK WG (230V)</b>
11	1761101604	<b>MOTOR FAN 230V</b>
12	1601124	<b>VENTILATED CONDENSER</b>
13	170111342	<b>WHITE CABINET (IN WG)</b>
13	170111126	<b>CABINET WG</b>
14	3822714	<b>SWITCH 115/230V</b>
15	1501521	<b>AGITATION PUMP 230V</b>
16	099130	<b>R-UGN</b>
21	170111344	<b>SKINPLATE FRONT PANEL</b>
20	170111122	<b>FRONT PANEL</b>
21	170111121	<b>REAR PANEL</b>
21	170111345	<b>SKINPLATE REAR PANEL</b>
22	170111127	<b>BASE "WG"</b>
24	815614022	<b>RED LIGHT 230V</b>
29	3824930	<b>THERMOSTAT ICE BANK "MINI"</b>
33	3821914	<b>LEVEL CONTROL 230V</b>
6	2541505	<b>2 PROBE CARBONATING UNIT</b>
10	1761517008	<b>PUMP 230 V</b>
52	2521477	<b>PROBE 140 mm</b>
9	2521476	<b>PROBE 60 mm</b>
8	2641526	<b>CARBONATOR SECURITY VALVE + O ring</b>
7	2521478	<b>CARBONATING INLET PIPING</b>
53	2521479	<b>NO RETURN VALVE</b>