



# ARCTIC CHILL 108

## Parts List

WCPC108 – WCPTC108

**AA FIRST is a division of CIRCON LTD: Registered in England 5121722**

**UK HQ:**

Cedar House  
Grange Farm  
Long Lane  
Newbury, RG14 2TF

**T:** +44 (0) 1635 202489  
**E:** enquiries@aafirst.co.uk  
**W:** aafirst.co.uk

**FRENCH HQ:**

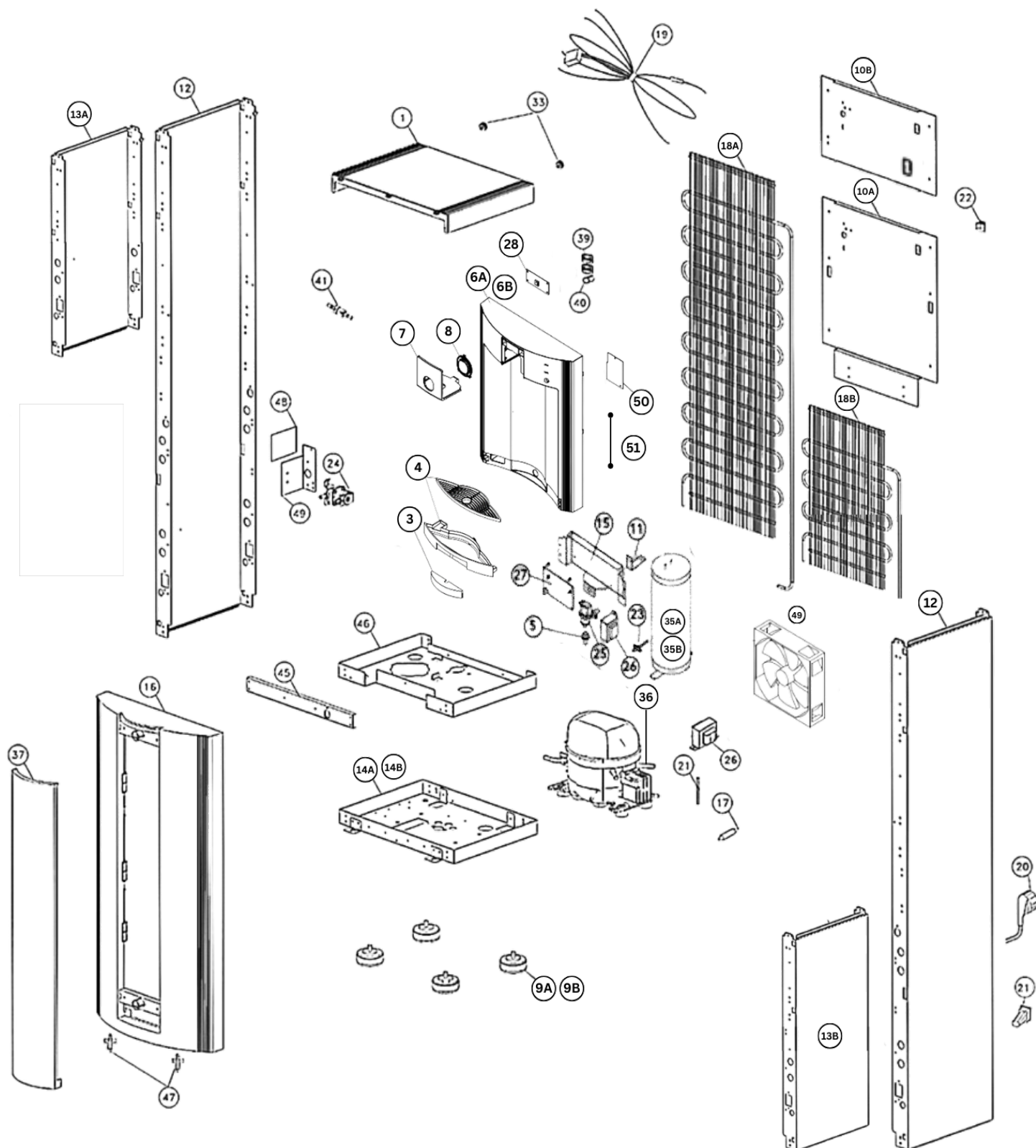
**T:** +33 (0) 674 437 445  
**E:** derek@aafirst.eu  
**W:** aafirst.fr  
**W:** aafirst.de

**T:** +33 (0) 670 817 660  
**E:** marike@aafirst.eu  
**W:** aafirst.fr  
**W:** aafirst.de

**AA FIRST**  
*Quality – Reliability – Integrity*



## ArcticChill 108 Water Cooler Parts List



**AA FIRST is a division of CIRCON LTD: Registered in England 5121722**

**UK HQ:**

Cedar House  
Grange Farm  
Long Lane  
Newbury, RG14 2TF

T: +44 (0) 1635 202489  
E: enquiries@aafirst.co.uk  
W: aafirst.co.uk

**FRENCH HQ:**

T: +33 (0) 674 437 445  
E: derek@aafirst.eu  
W: aafirst.fr  
W: aafirst.de

T: +33 (0) 670 817 660  
E: marike@aafirst.eu  
W: aafirst.fr  
W: aafirst.de

NO.	DESCRIPTION	CODE	REMARKS
1	Top POU Cover	WB3301	
3, 4	Drip Tray Complete	WB552022N	
5	Hygiene Guard Clear Type Nozzle	WB8819	
6a	Upper Front Panel Complete	WB10806CN	6, 7, 8, 28, 39, 40, 50
6b	Upper Front Panel Complete (CL printing)	WB10806CLN	6, 7, 8, 28, 39, 40
7,8	Push Button Facia Complete	WB10807C	Included with 6a & 6b 108 Logo
9a	Adjustable Foot Floor Standing	WB3327	
9b	Adjustable Foot Tabletop	WB3327T	
10a	Rear Panel Floor Standing	WB3309	For R-600a
10b	Rear Panel Tabletop	WB8804NR	For R-600a
11	Tank Bracket	WB8805	
12	Side Panel Floor Standing	WB3305	Left & Right Universal
13a	Side Panel Tabletop	WB33048L	Left side
13b	Side Panel Tabletop	WB33048R	Right side
14a	Base Flor Standing	WB3310	
14b	Base Tabletop	WB3310T	
15	Solenoid & PCB Bracket	WB10815	
16	Lower Front Panel	WB3307	
17	Filter / Drier	WB4453	
18a	Condenser Floor Standing	WB8808	Non-stocked Item
18b	Condenser Tabletop	WB8808T	Non-stocked Item
19	Wiring Loom	WB10819	
20	Mains Lead	WB3333	
21	Mains Socket	WB3348	
22	On/Off Switch	WB3322	
23	Thermistor Cold	WB8810	
24	Inlet Solenoid	WB4486	Grey coil
25	Outlet Solenoid	WB8817	
26	Transformer	WB8820	
27	Main PCB (New) R600	WB8811RN	From serial no AA23041136RN
28	Dispensing PCB	WB10928	Included with 6a, 6b
33	Top Cover Fixings	WB3325	
35a	Cold Tank Assembly	WB8813	
35b	Cold Tank Assembly Tabletop	WB8813T	
36	Compressor Relay (Daewoo)	WB3355NR	For serial numbers ending in “R”

**AA FIRST is a division of CIRCON LTD: Registered in England 5121722**
**UK HQ:**

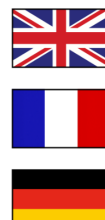
Cedar House  
Grange Farm  
Long Lane  
Newbury, RG14 2TF

**T:** +44 (0) 1635 202489  
**E:** enquiries@aafirst.co.uk  
**W:** aafirst.co.uk

**FRENCH HQ:**

**T:** +33 (0) 674 437 445  
**E:** derek@aafirst.eu  
**W:** aafirst.fr  
**W:** aafirst.de

**T:** +33 (0) 670 817 660  
**E:** marike@aafirst.eu  
**W:** aafirst.fr  
**W:** aafirst.de



NO.	DESCRIPTION	CODE	REMARKS
37	Lower Facia Blanking Panel	WB332733	
39	Led Windows		Included with 6a,6b WB10806C(L)
40a	White Windows (Round)		Included with 6a. WB10806C
40b	Purple Window (Round)		Included with 6b. WB10806CL
47	Panel Fixing Springs	WB3308	
48	Tank Shelf	WB8821	
49	Cooling Fan	WB8815	For tabletop models only
50	Led PCB only compatible with WB8811RN	WB8850RN	Included with 6a. WB10806C
51	Wire to Connect Led PCB to Main PCB	WB8851RN	From serial no AA23041136RN

**AA FIRST is a division of CIRCON LTD: Registered in England 5121722**

**UK HQ:**

Cedar House  
Grange Farm  
Long Lane  
Newbury, RG14 2TF

**T:** +44 (0) 1635 202489  
**E:** enquiries@aafirst.co.uk  
**W:** aafirst.co.uk

**FRENCH HQ:**

**T:** +33 (0) 674 437 445  
**E:** derek@aafirst.eu  
**W:** aafirst.fr  
**T:** +33 (0) 670 817 660  
**E:** marike@aafirst.eu  
**W:** aafirst.fr  
**W:** aafirst.de